

MAKING A DIFFERENCE SINCE 1985

[www.selc.com.au](http://www.selc.com.au)



*“We embrace change enthusiastically and invest in excellent teachers, ensuring that all SELC’s programs are of the highest quality and that our learning environments at both of our Sydney schools are the best possible. We hope you will take the opportunity to learn and grow with SELC!”*

*Kim Rennie, Director of Studies*



# SELC in SYDNEY

You can find what you’re looking for here at SELC - in either of our two Sydney campuses!

For over 29 years SELC has maintained its reputation as a leading English language college with a long history of offering professionally developed specialist and tailor-made English courses as well as traditional ones.

## About SELC in Sydney

- Why choose SELC? ..... 1 & 2
- SELC in Bondi ..... 3
- SELC in Sydney City Centre ..... 4
- SELC Courses at a Glance ..... 7 & 8
- Why students improve their English faster at SELC ..... 9
- NEW SELC Intensive English Boost program ..... 10
- Timetables for Bondi and City campuses ..... 11
- SELC Student Program Progression Table ..... 12

## SELC English Courses

- General English Program ..... 13
- General English Focus and Skill Development Electives ..... 14
- NEW SELC Academic English Program ..... 15 & 16
- IELTS Preparation Programs ..... 17
- English for Business Communication ..... 18
- Cambridge Test Preparation Programs ..... 19
- NEW Cambridge Test Preparation Programs at SELC ..... 20
- English for Customer Service Communication ..... 21
- English for Health, Fitness and Wellbeing ..... 22
- NEW English for Nursing Program ..... 23
- NEW SELC OET Preparation ..... 24

## Student Services

- Academic Counselling ..... 25
- Working Holiday Programs and Job Finding Skills Workshops ..... 26
- Accommodation ..... 27 & 28
- Social Activities and Student Life at SELC ..... 29 & 30



## English Only Policy

### Learn to think in English

When students arrive at SELC for their first day orientation we begin their introduction to the Australian lifestyle and culture by providing encouragement to begin ‘thinking in English’ both in and outside the classroom as we believe that it is only through practicing English that it is truly learned.

Inside SELC our English Only policy is positively enforced and students are rewarded for interacting in English with our teachers and friendly staff as well as students from other nationalities, but most importantly with students from their own nationality at all times.



## Practice English

### Practice English in the SELC student café

One of the best things about each day at SELC is the way the teachers and other staff encourage and reward all the students to speak in English at all times – especially during breaks while you enjoy a delicious coffee in the SELC student room/café.





# Why choose SELC?

## How does SELC differentiate itself from other schools?

### History and Culture since 1985

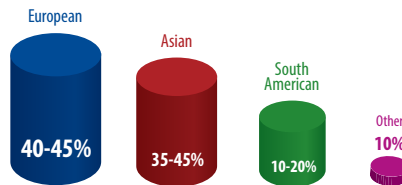
Over the last three decades SELC has developed its own culture and unique atmosphere, which separates us from larger, less personal schools in Australia and internationally. Students arriving at SELC for the first time are usually surprised at the range and quality of the excellent facilities SELC has to offer and they immediately gain a sense of the more personal and nurturing learning environment that is an integral part of SELC's culture.

### Quality and Variety

Our dedication to academic excellence and personal service provides every kind of language learner with an unforgettable, unique learning and cultural experience. SELC is large enough, with more than 50 dedicated staff and between 300 and 450 students at two centrally located campuses, to provide a wide range of interesting courses, excellent facilities and qualified, experienced teachers, yet still small enough to provide individual, personalised and friendly service to students of all ages and cultures from over 35 non-English-speaking backgrounds.

### A Truly International Experience

Our student body is made up of people from over 35 different countries from all parts of Europe, Asia and South America. This diverse cultural mix helps to create the college's special atmosphere. We offer students the chance to learn English and also to learn about cultures from all over the world.



### Academic Excellence and Support

At SELC every student is provided with a unique opportunity to improve their English ability and see a more rapid progression during their course in all language skills as a result of:

- the quality and experience of our teachers- SELC teachers are all well qualified and take part in an ongoing professional development program. All of our dynamic SELC teachers are university graduates and experienced certified second language instructors and are known for being friendly and helpful
- the structure of our 4 and 5 week programs which include skills electives and extra workshops- our flexible timetable which is suitable for students on any type of visa with a variety of different goals for their language learning
- the high level of support provided by our dedicated team- including academic counselling and progress reports for all SELC students from day one of every SELC student's English program

### Use 'real' English

#### Chat with the Locals

One additional way that students can make 'real' conversation with native speakers is to come along to our specially organised afternoon 'Chat with the Locals' groups which are designed to be informal and friendly thereby enabling SELC language students to meet 'real' people in a safe and relaxed environment.

Tim Tams and coffee are provided and all SELC students are invited to come along to practice their English and meet some of the local characters in these free afternoon sessions.



*"I never missed the "free chat with the locals" conversation sessions after class at SELC. It gave me a chance to practice my English in a fun way and I learnt a lot about Sydney and Australian people as well"*





*"I decided to study at SELC in Bondi because my friend had recommended that it was the most exciting and beautiful place in Australia. I am happy to say she was not wrong. Bondi really has the best of everything"*



# SELC in BONDI

Bondi in Sydney is a great place to live and study English.

This world-famous beachside region of Sydney is known for its spectacular beauty, relaxed lifestyle and friendly people. Bondi has an amazing range of outdoor areas to be enjoyed by all kinds of people with lovely sandy beaches and parks, coastal walks and a superb climate to enjoy it all in. Bondi is just minutes by public transport to the centre of Sydney city centre and provides students with a safe and cosmopolitan living environment that boasts stunning beachside architecture and an exciting entertainment quarter featuring a diverse range of cafes, bars and restaurants to suit every taste and budget.

## Location

SELC Bondi is located in a secure residential and commercial area in Sydney's Eastern Suburbs, one of the city's most popular and attractive areas:

- Supermarkets and department stores
- State-of-the-art cinema and entertainment complex
- International Food Courts
- Gyms and Wellness Centres
- Australian and international fashion stores

Bondi Junction also has a pedestrian-only shopping mall with a weekly growers' market and a wide variety of shops. SELC Bondi is:

- 4 minutes' walk to trains and buses
- 10 minutes by bus to Bondi Beach
- 10 minutes by train to the city centre
- Close to major universities
- Minutes from great shopping, restaurants, and cafés



## Facilities

### Large Student Areas

SELC Bondi offers a pleasant learning environment with modern, comfortable facilities

- 22 classrooms, most with natural light
- State-of-the-art, student-operated café
- Information notice boards (accommodation, work, social activities)
- Free wireless internet access
- Table tennis
- Hot and cold drinks machines
- Snack machines and microwaves
- Large outdoor balcony with ocean view

### Library and Computers

SELC students have access to a well-resourced library and are able to borrow from an extensive range of materials. SELC has:

- 2-3 computer laboratories with broadband Internet access and free WiFi throughout the school
- Library: books, test/grammar practice materials and DVDs to borrow
- Magazines and newspapers to read
- Librarian on duty to help and advise









# SELC in SYDNEY CITY CENTRE

New campus in the heart of Australia's most beautiful city

SELC's new Sydney City campus is located in a modern building on the stylish end of York Street right in the heart of exciting Sydney. The school is just a few steps from the main city station (Town Hall) beside the historic Queen Victoria Building and in the other direction it is just a five-minute walk to the Sydney Harbour Bridge where you can experience the delights of the iconic Sydney Opera House in the harbour-front area or take a ferry from Circular Quay.

## Facilities

### Large Student Areas

SELC's spacious and modern facilities are conveniently located in Sydney City Centre. The brand new campus features:

- nine large classrooms
- modern computer room and free Wi-Fi
- student-operated café with two 'state of the art' espresso machines
- spacious student room with natural light and floor to ceiling windows overlooking York Street.



*"I decided to study English at SELC's City Campus so that I could be right in the centre of Sydney. It's a great school and the teachers are generous with both their time and knowledge and great advice on how to improve your English the best way for you."*



### Academic Excellence in New and Traditional SELC Programs

Our new campus in Sydney City provides the same level of academic excellence as our famous Bondi school with a combination of innovative new programs as well as our highly regarded traditional language programs delivered by our experienced, qualified teachers.





*"I started my English course in General English and graduated in AEP. Now I have started my study at university and I can say honestly that my English study at SELC was so valuable"*



# SELC Courses at a Glance

All courses are modular in design so that students can choose to study from 2 to 52 weeks.

SELC offers courses to suit all students' needs and levels, from beginners who want to study General English to more advanced students who want to prepare for exams such as Cambridge, IELTS, TOEIC/TOEFL or OET.

Currently SELC Sydney offers these practical and academic courses:

## General English

**Beginner to Advanced (2 to 52-week course with start dates every Monday)**

This course aims at developing students' overall proficiency in the four skills (speaking, listening, reading and writing) in general or everyday contexts. Students at lower levels also take part in weekly skills development electives to improve their areas of weakness in either reading and writing or speaking and listening while students at higher levels choose special interest focus electives in areas such as Test Preparation, Grammar and Writing, Business English, Australian Studies in Culture and Sport, English for Health Fitness and Wellbeing.

## IELTS Preparation

**Intermediate to Advanced (2 to 24-week course with start dates every 4 weeks) available at Bondi Campus (daytime only) and City Campus (evenings only)**

This course helps those students who need an IELTS score to enter their chosen academic institution as it focuses on exam techniques and strategies. It also includes simulated IELTS tests and interview practice for the Academic Module but is also useful for IELTS candidates wishing to take the General Training Module. SELC is an authorised Pre-test centre, enabling students to gain practice using authentic IELTS materials.

## Intensive Cambridge Test Preparation

**Upper Intermediate to Advanced (10 or 12-week courses starting 4 times per year in January, March, June and September) available at Bondi Campus only**

Cambridge tests have always been popular in Europe and are increasing in popularity in Asian and South/Latin American countries. Our Cambridge Preparation courses familiarise students with exam format and equip them with the skills and strategies needed for success in the Cambridge English First (FCE), Cambridge English Advanced (CAE) and Cambridge English Proficiency (CPE) tests.

## NEW Fast Track to SELC Cambridge Test Preparation

**Intermediate (4 to 12-week course with start dates every Monday)**

This flexible program provides SELC students with an accelerated learning pathway to SELC Cambridge Preparation courses. This pathway course is ideal for students with an intermediate level of English who would like to gain entry into SELC's Cambridge First Preparation Programs. This four to twelve-week program will fast track students' progress by providing an introduction to the skills and techniques required for success in the Cambridge exams.

## NEW SELC Cambridge Flexi-First Evening Test Preparation Program

**Strong Intermediate to Advanced (2 to 12-week courses with starts every Monday) available at City Campus evenings only.**

SELC City Campus now offers a flexible yet focused evening Cambridge English First Preparation program for serious, motivated students who are not able to attend a full-time course in the daytime due to other commitments. Students may join this more flexible Cambridge Preparation Program on any Monday. They can study from two to twelve weeks in this rotating course and are not required to take the Cambridge exam on completion of the course.





### English for Customer Service Communication

**Elementary to Pre-intermediate (4 week course with start dates every 4 weeks)**

This course will help those looking for hospitality work to communicate in work situations such as cafes and hotels as well as providing the practical skills required for paid work as a 'Barista' making and serving all kinds of coffees (cappuccino, latte, espresso etc). Students study and practise the skills required for employment in SELC's Café and gain the confidence and qualifications that can help them find work in Australia.

### English for Business Communication

**Intermediate to Advanced (2 to 24-week course with start dates every 4 weeks)**

Aimed at people working in international business or those wishing to do so, the SELC English for Business Communication course offers all the language and cultural skills needed by people who use English for their work. Students participate in real-life business projects including presentations, meetings and negotiations, as well as attending interesting lectures and varied excursions.

### English for Health, Fitness and Wellbeing:

**Intermediate (4 weeks) available at Bondi Campus only**

This course is for students who have an interest in health and fitness and would like to learn the practical skills and English they need to help them to improve their overall wellbeing. The course provides an excellent foundation for further study in these areas.



### Academic English Program (AEP)

**Intermediate to Advanced (5 to 30-week course with start dates every 5 weeks) available at the City Campus only**

This course is for students who wish to enter an Australian university or vocational college and uses authentic material appropriate for tertiary study. SELC offers a comprehensive academic English course (catering also for IELTS preparation) featuring 3 levels from intermediate to advanced, (from IELTS 4.5 up to 7.0 +). Classes are offered in the morning with self study tutorials in the afternoon for personalised study support. SELC's AEP course is recognised as satisfying the English language requirements for progression to courses at many important Australian tertiary institutions without the need for our students to have an IELTS or TOEFL score or to take the IELTS test.



### NEW SELC English for Nursing Program

**Intermediate (8 weeks)**

This eight-week program offers an opportunity for intermediate level students to develop their English language and communication skills sufficiently to advance to the Occupational English Test (OET) Preparation Program and ultimately pass the OET. The course centres on language content that is relevant to nurses and health

### NEW Occupational English Test (OET) Preparation Program

**Upper Intermediate to Advanced (8 weeks)**

This course is designed for overseas-trained healthcare professionals who are preparing for the Occupational English Test (OET) and are seeking professional registration in Australia. The course will help students identify particular areas of need in their English language development and to address those areas through a focus on the specific requirements of the OET. Course materials have been designed to reflect the types of tasks found in the OET with a focus on approaches to the tasks and help with test-taking strategies.



*"I had an offer for a place at an Australian university but I didn't have the required English level. I needed to improve quickly to be accepted so I had to work really hard. The extra help I got from studying at SELC helped me achieve my goal."*



# Why do students improve their English faster at SELC?

## How does SELC differentiate itself from other schools?

### Accelerated Academic Progress

Unlike many other language schools, SELC has **4-week** terms for most programs. This gives our motivated students the opportunity every four weeks to progress faster through the class levels based on their individual progress.

At SELC not only can students accelerate their progression between levels through their dedication to study and demonstrated ability, but they can also change their individual study plan at any time to experience different types of English language programs from our wide range of interesting courses and flexible timetables.

### Progress Testing and Individual Academic Progress Report

At SELC every student can clearly see how much their English ability in all language skills has improved and the progress they have made during their course with our unique SELC Academic Student Progress Reports. Each term every SELC student receives a record of their individual reading, writing, speaking, listening and grammar test scores and levels.

On day one when a new student arrives at SELC, their English level is recorded and their goals are discussed in a one-to-one meeting with a SELC teacher as part of our first day placement test. Each student has the opportunity from the very beginning of their program to express their wish to focus extra attention on developing either their academic or communicative skills based on their individual strengths and weaknesses.

Through regular progress testing for each student at the end of every term and the availability of the Academic Progress Report, SELC students have the advantage of being able to plan their course of English study and track their progress, which is clearly documented and available to discuss with their teachers as required.

The Individual Academic Progress Report essentially provides SELC students with an ongoing snapshot of their progress in all skills and is therefore useful in identifying areas of weakness which can be worked on in our Friday Afternoon Tutorial Workshops where strategies for improvement can be recommended by our teachers.



### SELC Friday Afternoon Tutorial Workshops

SELC students from every level and every course have the unique opportunity to sign up for our weekly Friday afternoon tutorial workshops which are offered three times per four week term.

In these small sessions our students can receive guidance from our experienced teachers in specific areas of weakness in their language development and discuss any concerns or queries they may have regarding their individual progress.

These sessions are ideal for motivated and focused students who would like to make faster progress towards their academic goals or entrance to further study in university, TAFE or vocational college.

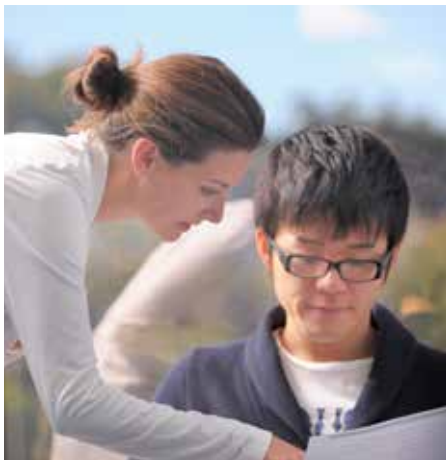




# NEW: SELC Intensive English Skills BOOST Program for lower level students

How can I improve my academic or spoken English ability even faster?

Many students especially at lower levels need to accelerate their learning and progress faster in order to achieve their individual English language learning goals and SELC recognises that some students have only a limited time to improve their English skills.



For this reason SELC now offers an afternoon English Boost program for students who really want to push themselves to achieve their aims with us. These may include gaining entry to a further study program with one of SELC’s many institutional vocational or university partners (see page 25) or improving spoken communication skills for a job or internship in Australia or another country where effective English communication skills are required for success.

SELC proudly introduces the new Intensive English Skills Boost Program designed especially for highly motivated, lower-level students who want to focus on improving their particular weakness in either Academic or Communicative English language skills.

SELC’s new Intensive English Skills Boost Program features two streams of small, intensive one-hour additional group lessons delivered from 3.15pm to 4.15pm four days per week on Monday, Tuesday, Wednesday and Thursday afternoons.

## Academic Stream

**Intensive English Skills Boost Program focuses on:**

- Reading
- Writing
- Grammar
- Test-Taking Skills
- Critical Thinking Skills
- Written Presentation Skills

## Communication Stream

**Intensive English Skills Boost Program focuses on:**

- Speaking
- Listening
- Accent reduction
- Pronunciation
- Presentation and debating skills
- Assertiveness skills



*“The afternoons I spent improving my weak points in English in SELC’s Intensive Skills Boost course have really helped me. I really appreciated the extra time I had with my teacher and I improved my overall ability by focusing on my writing skills which is where I needed the most help.”*

## SELC Intensive English Skills BOOST Program

	Monday	Tuesday	Wednesday	Thursday	Friday
9:00 - 10:30 90 mins	Lesson 1	Lesson 1	Lesson 1	Lesson 1	Lesson 1
10:30 - 11:00	BREAK				
11:00 - 12:30 90 mins	Lesson 2	Lesson 2	Lesson 2	Lesson 2	Lesson 2
12:30 - 13:30	LUNCH				
1:30 - 3:00 90 mins	Lesson 3	Lesson 3	Lesson 3	Lesson 3	
15:00 - 15:15	BREAK				Social Activities
3:15 - 4:15 60 mins	Intensive English Skills BOOST	Intensive English Skills BOOST	Intensive English Skills BOOST	Intensive English Skills BOOST	





"When I first arrived in Australia my English level was quite low. I had learned English at high school but still couldn't speak very well. The variety of courses at SELC helped me to gain confidence and improved my ability in everyday communication."



# SELC Bondi and Sydney City Timetable

## SELC Daytime English Timetable (Bondi and City Campuses)

	Monday	Tuesday	Wednesday	Thursday	Friday
9:00 - 10:30 90 mins	Lesson 1	Lesson 1	Lesson 1	Lesson 1	Lesson 1
10:30 - 11:00	BREAK				
11:00 - 12:30 90 mins	Lesson 2	Lesson 2	Lesson 2	Lesson 2	Lesson 2
12:30 - 1:30	LUNCH				
1:30 - 3:00 90 mins	Lesson 3	Lesson 3	Lesson 3	Lesson 3	
3:00 - 3:15	BREAK				Social Activities
3:15 - 4:15 60 mins	Intensive English Skills Boost	Intensive English Skills Boost	Intensive English Skills Boost	Intensive English Skills Boost	



### SELC Essential English Timetable

**Monday to Friday 9am to 12.30pm and Wednesdays 9am to 3:00pm**  
(Morning Lessons - 16.5 hours per week)

SELC Essential English Timetable is suitable for students on tourist or working holiday visas who would prefer to have afternoons free. This timetable is available only for General English students. Students may stay for the third lesson on each Wednesday.

### SELC Intensive English Timetable

**Monday to Thursday 9am to 3pm and Friday 9am to 12.30pm**  
(Full-day Lessons - 21 hours per week)

SELC Intensive English Timetable is for students on all visas at all levels and is a requirement for those on student visas who must study at least 20 hours per week. This timetable is available for students studying in all SELC Programs excluding Academic English Program (see page 15).

### SELC Intensive English + English Skills BOOST Program

**Monday to Thursday 9am to 4.15pm and Friday 9am to 12.30pm**  
(Full-day Lessons plus extra afternoon - 21 + 4 hours per week)

SELC's new English Skills BOOST Program assists students who want to push themselves academically to accelerate their learning and achieve their goals faster. Designed for lower level students (Elementary to Pre-Intermediate) who would like to focus on improving their particular weaknesses either in Academic or Communications skills.

Delivered as four additional one-hour lessons (at an additional cost) on Mondays through to Thursdays, these small class groups are in two streams:

1. Academic Skills Stream including reading, writing, test preparation skills and critical thinking skills
2. Communication Skills Stream including speaking, listening, pronunciation, accent reduction, presentation, debating and assertiveness skills.

## SELC Evening English Timetable (City Campus only)

	Monday	Tuesday	Wednesday	Thursday	Friday
5:15 - 7:15 120 mins	Lesson 1	Lesson 1	Lesson 1	Lesson 1	Lesson 1
	BREAK				
7:30 - 9:30 120 mins	Lesson 2	Lesson 2	Lesson 2	Lesson 2	Lesson 2

SELC Evening English Timetable (City Campus only) is available for students on any visa including student visas who would prefer to study in the evening, leaving the days free for work or other commitments.



# Student Program Progression Table

An overall guide to SELC courses and their levels with entry and exit points

SELC Levels	Beginner (8 or 12 wks)			Elementary (8 or 12 wks)			Pre-Intermediate (8 or 12 wks)			Intermediate (8 or 12 wks)			Upper-Intermediate (8 or 12 wks)			Advanced (8 or 12 wks)			Near Native
	4	4	4	4	4	4	4	4	4	4	4	4	4	4	4	4	4	4	
<b>SELC Levels and standardised test score comparisons (Min. entry to max exit)</b>																			
IELTS							< 4.5			4.5 - 5.5			5.5 - 6.5			6.5 - 7.5			
TOEFL (IBT)							< 34			35 - 59			60 - 84			85 +			
TOEIC							540-580			580-620			620-720			720 +			
CEFR Levels*						A1			A2			B1			B2			C1	C2
<b>SELC Courses</b>																			
General English (2-52wks)																			
Academic English (5-30 wks)**																			
IELTS Preparation (2-24 wks)																			
English for Business Communication (4-24 wks)																			
Cambridge Test Preparation Programs (2 to 12 wks)																			
English for Customer Service Communication (4 wks)																			
English for Health, Fitness and Wellbeing (4 wks)																			
Occupational English Test Preparation (8 wks)																			
English for Nursing (8 wks)																			

\*The Common European Framework of Reference

\*\*Academic English has 5-week terms



*“General English was a perfect course for me to start improving my English language skills. I needed the basics and this course gave me the confidence to start speaking and using the grammar and vocabulary that I learned.”*



# General English

General English is the best choice for students who want to be able to use English better in a variety of different situations. While all skills are taught, General English emphasises speaking and listening and includes a wide range of functional English to help students feel at ease in any situation and start to feel more at home in the English-speaking world right from the beginning.

## All major skills are covered:

- Speaking & Pronunciation
- Listening
- Reading
- Writing
- Vocabulary
- Grammar

## Course features

- News-based lessons
- Task-based lessons
- Discussions
- Multi-media and computer based lessons
- Using English in the real world, e.g. shopping, eating out, travel or making conversation
- Project work



## One to One / Private Lessons

If you have limited time or specific needs, you may be interested in private lessons. We can arrange short-term one-to-one private tuition with a SELC teacher.

## Electives for General English (Upper Levels)

Intermediate and above level students

### Intermediate to Advanced Level students

Every Wednesday students in the General English course (Intermediate and above) do a full-day elective course. This gives them a change of learning environment and allows them to direct their studies toward their own specific interests or goals.

At the beginning of each term students can choose to focus on test preparation, on improving their listening and speaking or grammar and writing, or take fun cultural courses which enable them to explore more of Sydney. Our electives are offered on a rotating basis and may include:

### Listening and Speaking

In this elective students learn the sort of English native speakers use in everyday situations. The lessons are fun and include pronunciation practice, role-plays, study of idioms, talking to native speakers and lots of discussion and informal chats. It is a great way to improve confidence in listening and casual conversation skills.

### Grammar and Writing

The Grammar and Writing elective consolidates students' knowledge of English and increases their confidence by focussing on accuracy in both spoken and written English.

### TOEIC / TOEFL preparation

For students who wish to develop the skills and strategies needed to do well in these tests. We offer:

- Simulated test practice
- Vocabulary extension
- Reading skills
- Speed reading skills
- Test-specific grammar review
- Computer-based test practice
- Error correction tasks
- Idiomatic language

### SELC is an official TOEIC Test Centre.

SELC students who wish to sit the TOEIC test can apply directly at SELC. The tests are held every two months, with dates displayed on our Academic Counselling notice board.



### Business English

This elective gives you an introduction to the written and spoken English skills you need for working in English in a business environment. The elective provides a useful overview of the topics, vocabulary and presentation skills which are more thoroughly explored in SELCs full-time English for Business Communication program.



### Australian Studies in Culture and Sport

This elective offers a chance to experience Australian culture and join in watching and playing some of our popular sports while learning English. It combines lessons with trips to the most interesting historic and cultural spots around and beyond Sydney. Students learn about Aboriginal society, see Australia's incredible animals, watch or play popular Australian sport and visit interesting places that many tourists don't find!

### English for Health, Fitness and Wellbeing

This innovative and interesting English elective provides a very practical introduction to the vocabulary and study of health and nutrition, sports and fitness, alternative therapies and other lifestyle topics such as aromatherapy, yoga, meditation and stress relief.

## NEW Skills Development Electives for General English (Lower Levels)

### Elementary and Pre-Intermediate level students

#### Two Strands: Grammar and Writing Listening and Speaking Skills Development

At SELC we recognise that students at lower levels may not be equally as strong in the four different language skills: Reading, Writing, Speaking and Listening, so to help these students improve their overall ability at Elementary and Pre-Intermediate levels SELC has introduced Skills Development Electives.

Based on their initial assessment in the First Day Placement Test (for new students) or their End-of-term Progress Test results (for continuing students), learners are recommended to study in either Grammar and Writing or Listening and Speaking Elective classes for two lessons per week.

SELC Skills Development Electives are offered to SELC Intensive English full-time students only and are held twice a week in the afternoon lessons on Monday and Wednesday.

By changing their usual class for these two lessons per week, these students are also provided with a great opportunity to meet people from other class groups and different levels, as the Skills Development Electives class groups are based on students' individual needs in these skills.





*"I am proud to honestly say the academic English preparation that I took part in at SELC city campus gave me a solid base for my studies at university in Australia. I feel I have a real advantage over many of my college classmates who didn't receive the same level of preparation as I had at SELC"*



# NEW Academic English Program

Only available at Sydney City Campus morning program (24 hours per week)

SELC's new Academic English Program (AEP) is designed for students interested in studying at university or college.

3 levels from intermediate to advanced, from IELTS 4.5 up to 7.0 +

## Course features

- Academic reading and writing
- Vocabulary extension
- Text analysis
- Report and essay writing
- Study skills and strategies
- Listening and note-taking skills
- Grammar for study of academic materials
- Research project work
- Seminar/ presentation delivery
- IELTS test preparation skills

Students planning to go on to further study in an English-speaking environment should choose AEP. This course is designed to help students develop the language and study skills necessary for success at university, college or TAFE in an English-speaking country.

- A comprehensive academic English course catering for IELTS preparation and all students who want English for further study
- New study times: Our curriculum has been streamlined down to 10 week terms for faster student progression (2 x modules of 5 weeks = 24 hours per week)
- New timetable: classes in the morning, and new self study tutorials in the afternoon for personalised study support
- Entry point every five weeks



## Highly integrated course

All academic English needs are met in this new, more accessible course, whether students need IELTS preparation, university preparation or simply a well-structured, serious English course.



## New Timetable with Tailored tutorials:

	Monday to Thursday	Friday
9:00 - 11:00 2 hours	Lesson 1	Lesson 1
11:00 - 11:30 BREAK		
11:30 - 1:30 2 hours	Lesson 2	
1:30 - 2:00 LUNCH		
2:00 - 3:00 1 hour	Supervised Study Tutorial	

## Improved study times

We now offer 10-week terms. We have 2 modules per level (Module A = 5 weeks and Module B = 5 weeks), and each module can offer 20 hours face-to-face classroom teaching and four hours of personalised tutorial study every week. We have designed new, alternative AEP 1 modules for students with high IELTS requirements, enabling us to take students right up to the level of IELTS 7.0 and beyond.

One-hour tutorials are scheduled after lunch, Monday - Thursday. In addition to specific skills work supervised by the teacher, students will have access to SELC's library and multi-media materials, from listening kits to study software, and full use of SELC's computer rooms, with wide WiFi coverage. It is an ideal time to work on practice tests, plan assignments, improve grammar or discuss individual needs, all with a teacher on hand to assist students with their specific areas of weakness.





## Easy entry points with start dates every 5 weeks

Students can enter every five weeks, and our curriculum has been designed so students do not need to start on Module A; Module B can also be an entry point. We have also ensured that studying a full 10 week term gives students a comprehensive and unrivalled study experience of academic English, meeting the needs of IELTS and further study requirements.



SELC Levels	Entry IELTS	SELC Exit Marks	Exit IELTS
<b>AEP 1</b> (10 to 20 weeks*)	<b>IELTS 5.5</b> (with min 5.5 in reading/writing)	70 - 85	6.0 - 7.0
<b>AEP 2</b> (10 weeks)	<b>IELTS 5.0</b> (with min 5.0 in reading/writing)	60	5.5
<b>AEP 3</b> (10 weeks)	<b>IELTS 4.5</b> (with min 4.5 in reading/writing)	55	5.0

*\*Students who wish to enter courses requiring IELTS 6.5 or above may need more than 10 weeks in AEP 1*

SELC has direct entry agreements with over 45 universities and colleges throughout Australia. (See full list of further study institutions on page 25). Students can make an appointment with our Academic Counsellor to discuss their future study plans.





*"SELC's IELTS Preparation course gave me the strategies to approach the IELTS exam as well as the writing and reading skills which I had been having so much trouble with. I can recommend taking this course to any students preparing for their IELTS exam. I found the course very useful and the teachers were so helpful."*



# Daytime and Evening IELTS Preparation Programs

**Bondi Campus mornings (21 hours per week face to face)**  
**Sydney City Campus evening program (20 hours per week)**

The IELTS Preparation course is for students who need to prepare for the IELTS test. Students improve their language proficiency and test-taking techniques through skills development and graded test practice, focusing on each module and key task types. SELC is an authorised pre-test centre, enabling students to gain practice using authentic IELTS materials.

IELTS is the International English Language Testing System. It measures ability to communicate in English across all four language skills: listening, reading, writing and speaking – for people who intend to study or work where English is the language of communication. Candidates may choose either the Academic Module or the General Training Module:



**Course length: 2 - 24 weeks**

**2 levels, from Intermediate to Advanced**

- Intermediate: entry level IELTS 4.5; students aim for IELTS 5.5
- Upper Intermediate/Advanced: entry level IELTS 5.5+; students aim for IELTS 6.5+

## Academic Module

The Academic Module is intended for those wishing to enrol in universities and other institutions of higher education.

## General Training Module

The General Training Module is for those planning to undertake non-academic training or gain work experience, or is taken for immigration purposes.

The SELC IELTS Preparation Course focuses on the Academic Module and features:

- Detailed analysis of the test format and task types for Listening, Reading, Writing and Speaking
- Guided practice using IELTS question types for Listening and Reading
- Exercises matching the requirements of the marking criteria for Speaking and Writing
- Intensive study of key areas of vocabulary and grammar of IELTS-related topics
- Regular Practice IELTS tests





# SELC English for Business Communication

The English for Business Communication course is English for Special Purposes course. It prepares students for working in English in a business environment and will also assist students planning to sit the Cambridge Business English Certificate (BEC) exams.

The SELC Business English program provides students with the language skills needed for real-life English communication in the business world of the 21st century.

**Course length: 4 - 24 weeks**

**2 levels from Intermediate to Advanced**

21 hours per week

## Courses

**Advanced English for Business Communication** – Level: *Upper Intermediate to Advanced*

**Intermediate English for Business Communication** – Level: *Intermediate*

**Course Length:** 24 weeks full-time study; students may do 4 to 24 weeks of the course

## Course features

- Full-time course
- Contemporary and relevant topics
- Authentic business materials
- Realistic business situations
- Monthly team projects
- Individual PowerPoint presentations
- Role-plays
- Business-related excursions



## Course Topics include

- Communication
- Building Relationships
- Job Satisfaction
- E-Commerce/ Future of Work
- Marketing/ Advertising
- Success
- Risk/ International Trade
- Customer Service/ Team Building
- Raising Finance
- Takeovers/ Mergers
- Crisis Management
- Management Styles
- Globalisation & Trade
- Money & Banking
- Strategy
- Culture & Travel
- Brands & Advertising
- Innovation
- Competition
- Quality
- Employment
- Organisation
- Ethics
- Change



## This course is for students wishing to:

- Continue in their current job with improved English language skills
- Improve their chances of finding a job in the future by improving their English language communication
- Better understand the language of the business world
- Enhance their understanding of their first language Business studies
- Be introduced to Business English for the first time



*"I had heard that SELC's Cambridge Preparation graduates had some of the highest success rates in the Cambridge exams because of the excellent preparation they received. I found this to be completely true and I have my very special teachers to thank for my own success. I must also say I enjoyed every moment of this great course."*



# Intensive Cambridge Test Preparation

- **Bondi Campus** daytime (21 hours per week face to face plus 4 hours test practice)
- **Sydney City Campus** Cambridge First Certificate (only) Flexi evening program (20 hours per week)

The Cambridge exams (FCE, CAE, CPE) are essential in many countries and SELC's Cambridge Exam Preparation course helps students achieve the best results. Studying for the Cambridge exams can help students gain employment and ensure their future success in business. The courses are intensive and challenging and are taught by highly professional and experienced teachers.



## FCE – Cambridge English

### First (Upper Intermediate)

FCE is the most popular of all the Cambridge examinations. It shows that students can use English confidently in a variety of situations and is proof of ability to do office work or take a course of study in English. The examination consists of five papers: Reading, Writing, Use of English, Listening and Speaking.

## CAE – Cambridge English

### Advanced (Advanced)

CAE is an increasingly popular examination for students at advanced level who may need English for work at a professional or managerial level or who want to follow a course of academic study at university level. It is a very practical exam with five papers testing all the skills.

## CPE – Cambridge English

### Proficiency (Very Advanced)

CPE is a very high level examination for students needing a level approaching that of an educated native speaker. It is proof of ability to cope at a high academic or professional level. The course is suitable for those who have a wide vocabulary, enjoy literature and a range of other reading material, and can talk fluently on a wide range of topics.

## Bondi Campus Course length and hours of study :

**10 weeks (January & June)  
or 12 weeks (March & September)**

21 hours of classroom lessons + 4 hours per week of supervised Cambridge exam-oriented self-study after class. All students in the Cambridge Exam Preparation course must also sit for at least one Cambridge exam at the end of the course.

### Course features

- Supervised self-study program after class to focus on exam techniques
- 2-day excursion to a coastal location outside Sydney during 12-week courses
- 1-day excursion during 10-week courses

### About SELC Cambridge teachers:

Our Cambridge teachers have many years' experience preparing students for the Cambridge exams. SELC's enthusiastic Cambridge teaching team is committed to helping you really improve your English skills and get the best possible exam results.





# New Cambridge Preparation Programs at SELC

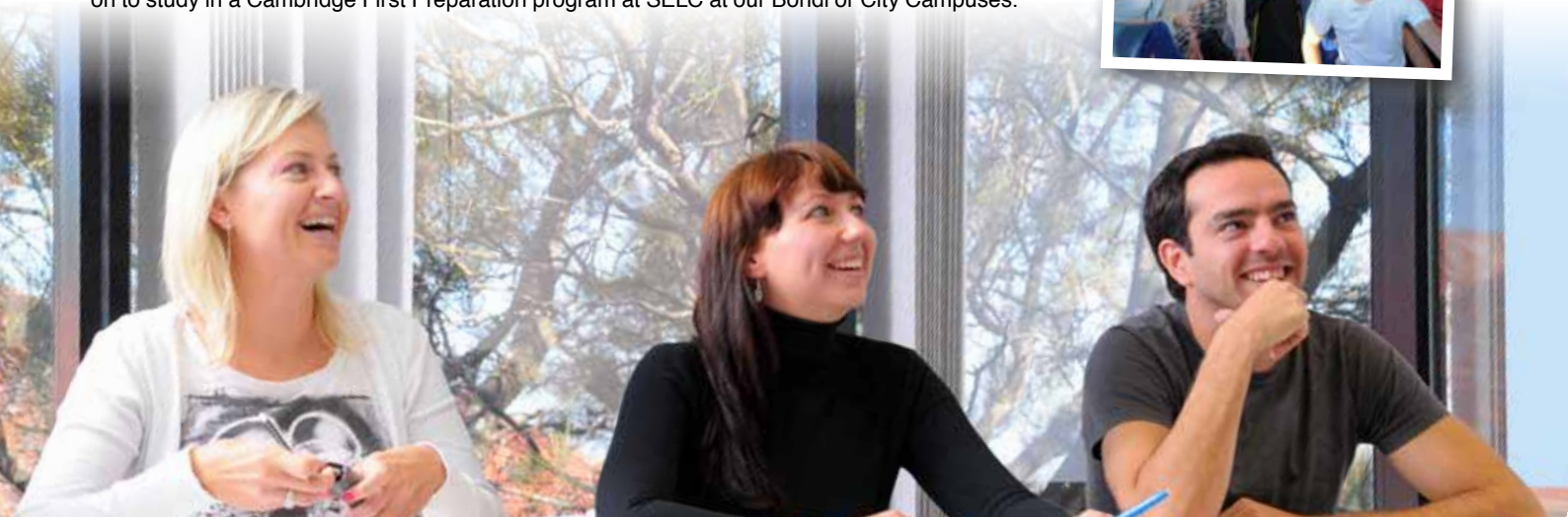
## NEW Fast Track to Cambridge Test Preparation Program

This flexible program provides SELC students with an accelerated learning pathway to SELC Cambridge Preparation courses.

This pathway is ideal for students with an intermediate level of English who would like to gain entry into SELC's Cambridge First Preparation Program. This 4 to 12 week program will fast track students' progress by providing an introduction to the skills and techniques required for success in the Cambridge exams.

SELC students who successfully complete the full 12 weeks of this pathway program can go on to study in a Cambridge First Preparation program at SELC at our Bondi or City Campuses.

- Intermediate level
- 4 to 12-week program
- Every 4 weeks



## NEW SELC Cambridge Flexi-First Evening Preparation Program (City Campus only)

SELC City Campus now offers a flexible yet focused evening Cambridge First Preparation program for serious, motivated students who are not able to attend a full-time course in the daytime due to other commitments.

With the guidance and support of our experienced teachers, SELC Cambridge Flexi-First Evening Preparation Program students will become familiar with the Cambridge First examination and develop the strategies required for success, while greatly improving their overall English language skills.

Students may join this more flexible Cambridge Test Preparation Program on any Monday and study from two to twelve weeks without being required to take the test.



- Strong Intermediate
- 2 to 12-week program
- Start any Monday



Practice tests are held in the City Campus for all SELC Cambridge Flexi-First Evening Preparation Program students on the final Friday of each four-week term. Students who enrol for the Cambridge First exam at SELC Cambridge Exam Centre will also have the opportunity to join full mock Cambridge exams (with SELC Bondi candidates) prior to the official test dates.



*"From the English skills as well as the practical training I received in this fantastic course I was able to get a job in a cool Sydney café. I practiced all my skills at the SELC student room/ café which is just like the real thing. The time I spent taking orders, making and serving coffees to the students and teachers gave me so much confidence to help me get this great job"*



# English for Customer Service Communication

The English for Customer Service Communication (ECSC) course is designed for students wanting to acquire a working knowledge of the functional English required for employment in a café or restaurant. Students gain the professional qualifications they need to secure employment throughout Australia.



## Course Structure

English + Professional Barista Training  
Practical vocational-style training for real work in a café. This is a 4-week full-time course

## Customer service

- Taking reservations and orders / dealing with complaints / small talk / receiving guests / presenting menus / explaining the bill / telephone language

## Practical coffee skills

- Coffee knowledge / coffee making / coffee decoration / quality control
- Job-seeking assistance
- Job ads / jobs and workplaces / resumé writing

## Operating SELC's café

- Cashier work / working under pressure / serving students and teachers / maintenance and cleaning of coffee machines and café



- Course length: 4 weeks
- 21 hours per week
- Elementary to Pre-Intermediate level

## This course is for people who want to:

- improve their English communication skills for the hospitality industry
- become a 'Barista'
- get work in a café / restaurant
- improve their English conversation skills

## Students completing the 4-week ECSC program receive a total of 3 certificates:

- The Barista Skills Certificate
- Certificate of Coffee-making (Latte Art)
- SELC's Certificate in English for Customer Service Communication

## SELC can also arrange for students to enrol in:

- The RSA (Responsible Service of Alcohol) Certificate
- The RCG (Responsible Conduct of Gambling) Certificate





# English for Health, Fitness and Wellbeing

## Bondi Campus (21 hours per week face to face)

English for Health, Fitness and Wellbeing is for students who have an interest in health and fitness and would like to learn the practical skills and English they need to help them to improve their overall wellbeing. The course provides an excellent foundation for further study in these areas.



### Course features

This is a 4-week course of 21 hours per week. It is for students who are at an intermediate level.

Each week has a different theme:

Week 1: **Health & Nutrition**

Week 2: **Sport & Fitness**

Week 3: **Alternative Therapies e.g. aromatherapy, acupuncture**

Week 4: **Wellbeing e.g. stress relief, meditation, yoga**

### Course includes

- Vocabulary of the body, emotions, food and nutrition, sport and exercise, alternative therapies and general health and wellbeing
- Functional grammar e.g. giving advice, talking about experience, giving instructions
- Computer-based lessons researching relevant topics
- Designing and conducting surveys and presenting results
- Authentic listening tasks on relevant topics
- Experience of practices such as meditation, relaxation techniques and positive thinking
- In-class talks / workshops by visiting speakers and professionals on topics such as Pilates, yoga and aromatherapy
- Visits to relevant places such as alternative therapy clinics, an organic food shop, a gym
- Homework tasks e.g. keeping a food / exercise diary, preparing presentations
- A group video project integrating students' learning for their future health, fitness and wellbeing

Students who successfully complete this four week course are eligible for entry to SELC Sport and Fitness Career College programs.



*Bondi is famous for the healthy lifestyle it offers residents and visitors. Come join us and experience this yourself.*





*"It has always been my dream to work in the healthcare industry in another country. Australia has always been a country that I have been interested to live and work in. Now I am living my dream and studying English at SELC so that I can use my qualifications as a nurse in this new and exciting place and start a new chapter in my life."*



# NEW SELC English for Nursing Program

This course is designed for overseas-trained healthcare professionals with an intermediate level of English who are preparing for the Occupational English Test (OET) and are seeking to gain professional registration in Australia. The eight-week program offers an opportunity for students to develop their English language and communication skills sufficiently to advance to the OET Preparation Program and ultimately pass the OET. The course focuses on language content that is relevant to nurses and health practitioners.



**After successfully completing this program, students are able to progress to the SELC OET Preparation Program.**

## Entry pre-requisites and English Level:

### Students must be:

- registered as a nurse or be in the medical profession in their country of origin
- Intermediate level or have an IELTS level of 5.5 (or OET mark equivalent).

## Course length: 8 weeks

- 21 hours per week face to face

## Students who successfully complete the course will:

- have improved their understanding and use of specified grammar points, eg. present perfect simple, past simple, past continuous, past perfect, articles, passives, prepositions, question forms, comparisons, expressing possibility, zero and first conditional
- have a better understanding of medical English
- be able to better understand native speakers in a nursing and healthcare environment
- be prepared for IELTS (level 6)

## The course is organised thematically with the main topic areas being:

- The hospital team
- Hospital admissions
- Accidents and emergencies
- Pain
- Symptoms
- Caring for the elderly
- Nutrition and obesity
- Blood
- Death and dying
- Hygiene
- Mental health nursing
- Monitoring the patient
- Medication
- Alternative treatments
- Outpatients







# NEW SELC Occupational English Test (OET) Preparation Program

The course is designed for overseas-trained healthcare professionals with an Upper Intermediate level of English who are preparing for the Occupational English Test (OET) and are seeking professional registration in Australia. The course will help students identify particular areas of need in their English language development and to address those areas through a focus on the specific requirements of the OET. Course materials have been designed to reflect the types of tasks found in the OET with a focus on approaches to the tasks and help with test-taking strategies.

## What is OET?

The OET is a language test for health practitioners who have qualified to practise in one country and wish to gain provisional registration to practise their profession in another which has an English-speaking context. The Test measures the language competency of health practitioners who are seeking registration and the ability to practise in an English-speaking context. It is designed to ensure that language competency is assessed in a relevant professional context.



## Entry pre-requisites and English Level

### Students must be:

- registered as a nurse or be in the medical profession in their country of origin
- Upper Intermediate level or have an IELTS level of 6.0 or over (or OET mark equivalent)

## Course length: 8 weeks

- 21 hours per week face-to-face



*"I am a registered and experienced nurse in Japan. I have just passed the OET exam thanks to the extraordinary guidance and support from my experienced and professional SELC teachers. The OET preparation course at SELC was practical, interesting and gave me the skills and strategies I needed to prepare for this very specific exam. The curriculum and course delivery were well above my expectations"*



## The course is organised thematically with the main topic areas being:

- Patient admissions
- Common health conditions: heart, respiratory, stomach, kidneys, skin, oncology, wound care, pregnancy
- Symptoms & signs
- Pain assessment
- Medical specimens
- X-ray & ultrasounds
- Radiotherapy, chemotherapy & physiotherapy
- Screening & immunisation
- Medications
- Charting and documentation
- Referral letters

## Students who successfully complete the course will:

- have improved their understanding and use of specified grammar points, i.e. narrative tenses, present perfect simple, past simple, past continuous, past perfect, articles, reported speech, superlatives and comparisons, modals and giving advice
- have improved their understanding of medical abbreviations
- have a better understanding of medical English
- be able to better understand and communicate with native speakers (and non-native English speakers) in a nursing and healthcare environment.
- be prepared for IELTS (level 7) or OET (B)



*"I chose to study English at SELC because I was told this school would provide a direct pathway to my acceptance into my chosen university in Australia and would also provide me with a strong base for my further studies as a non-native speaker."*



# SELC Academic Counselling Service

**At SELC we believe that students' success is our success. Students who want to study at university, college or TAFE in Australia can be assured that we will help them to get there.**

## Academic Pathways

Success at university, college or TAFE in Australia starts with Academic English Program (AEP) at SELC (see page 15 and 16). Many SELC students go on to further study in Australia and SELC has developed a range of links with major universities, colleges and TAFEs around Australia.

SELC's direct entry pathways allow students to enter directly into Foundation, Diploma, Bachelor and Master courses without an IELTS test.

**Our Academic Counsellor will help students to:**

- research which courses are available
- choose which course is best for them
- enrol at university, college or TAFE

## Direct entry to tertiary institutions

### Foundation Studies / Pathway Courses

- University of New South Wales (UNSW) Foundation Studies
- University of Sydney Foundation Program
- University of Wollongong Foundation Program
- Macquarie University Foundation Studies, Macquarie City Campus
- Sydney Institute of Business and Technology (SIBT) at Macquarie University
- University of Western Sydney (UWS College)

### Universities / Higher Education

#### UNDERGRADUATE:

- Macquarie University
- University of Western Sydney
- University of Wollongong
- Bond University
- Central Queensland University
- The International College of Management, Sydney (ICMS)
- Le Cordon Bleu (LCB)
- Raffles College of Design and

#### POSTGRADUATE:

- Macquarie University
- University of Western Sydney
- University of Wollongong
- Bond University
- Central Queensland University
- University of Newcastle (Graduate School of Business)
- The International College of Management, Sydney (ICMS)
- Le Cordon Bleu (LCB)
- Raffles College of Design and Commerce

### Vocational Studies

#### TAFE (TECHNICAL AND FURTHER EDUCATION):

- TAFE NSW
- William Angliss TAFE
- TAFE International Western Australia
- Brisbane North Institute of TAFE
- Northern Melbourne Institute of TAFE

#### BUSINESS COLLEGES:

- Martin College
- Williams Business College
- Kaplan Business School

#### VOCATIONAL COLLEGES:

- MEGT Institute
- Australian College of Physical Education (ACPE)
- Australian Institute of Music (AIM)
- Nature Care College
- JMC Academy
- Fuss Beauty College
- Australian Pacific Travel and Toursim (APPT)

#### VISUAL ARTS COLLEGES:

- Sydney International Film School
- Qantrm College
- School of Audio Engineering (SAE) Institute
- Massage Schools Queensland

#### HOTEL MANAGEMENT AND HOSPITALITY COLLEGES:

- The International College of Management, Sydney (ICMS)
- Le Cordon Bleu (LCB)
- The Hotel School Sydney
- Hostec Academy

To get direct entry without an IELTS test, students need to successfully complete a full 10-week cycle of AEP at SELC at the appropriate level.

To qualify for a Letter of Recommendation from SELC, students need to perform well in the following:

- Project work
- Presentation
- Homework
- Class participation
- Progress Tests



### SELC - ICMS Academic English Preparation Program

In collaboration with our partner, ICMS Sydney, SELC offers a 12-week course at ICMS Manly, designed to develop the business communication, academic writing, English language and introductory research skills required for entry into ICMS programs.



# SELC Friday Afternoon Job-Finding Skills Workshops

SELC offers Friday Afternoon Job-Finding Skills Workshops specially designed for the needs of working holidaymakers who intend to search for employment during or after their English study with us. These afternoon sessions are also available to student visa holders who are eligible to work for up to 20 hours per week while attending SELC classes and for longer hours during their study break or for the 4-week period at the end of their study before returning home.

## These very practical and well-organised workshops include:

- An introduction to the local and national market for job seekers from abroad on different visas
- Skills-matching to assist students to recognise their abilities and potential opportunities as international job seekers
- Tips for searching for work online and locally
- Assistance with preparation of resumes and cover letters
- Phone and face-to-face interview skills preparation

## Paid and Unpaid Farm Placement Assistance

SELC can help students find paid placements at commercial farms in South Australia, or unpaid placements (full board and meals provided) at smaller family-run farms in rural Victoria.

All fruit-picking and packing placements are in eligible locations for extending Working Holiday Visas for a second year.

A wide range of English ability levels are accepted, however for the commercial farms candidates should be able to pass a fitness test (lifting 15-20kg safely).



*"After improving my English to a suitable level for employment I was able to start looking for a job. At SELC I got a good start with the job finding skills I needed and the advice and support to explore the options available to me for working in Australia at the end of my course"*

## Job Assistance Package

SELC has partnerships with Job Assistance Providers which can help students on Working Holiday Visas to find employment in Sydney as well as many locations throughout Australia with offices in Melbourne, Brisbane and Perth plus New Zealand and Canada. For a membership fee Working Holiday Visa holders are offered:

- Welcome, Travel and Job Presentations with multilingual staff at all offices
- 12-month access to national job database and 12-month job assistance
- Bank account and TAX Number registration (TFN/IRD/SIN)
- Free luggage storage in Sydney, Auckland and Vancouver





*"Living with a homestay family was an unforgettable experience for me and a great way to improve my English at the same time. My family were so helpful and always made me feel welcome. I also learned so much about Australian life by spending this time with my SELC family."*



# Accommodation

Our accommodation department can arrange quality accommodation to suit your needs. Wherever possible, accommodation is close to SELC.

SELC's Homestay Program involves Australian families in the Eastern Suburbs. Families are chosen for their high-quality accommodation, friendliness, and interest in people from other cultures.

SELC's accommodation staff visit and interview families in the Eastern Suburbs. We choose families that are friendly and are able to provide good quality accommodation. Homestay accommodation gives you a wonderful opportunity to learn and practise your English. Staying with an Australian family is also a great cultural experience as you interact daily with local people.

## Homestay counselling

Homestay counselling is available and students are taught Australian customs and English expressions to help them settle into their homes. Homestay is a wonderful way to experience Australian life while studying English!



## There are 2 types of homestay:

### HALF BOARD:

- Private home
- Breakfast and dinner provided each day

### ROOM AND FACILITIES:

- Private home
- No meals provided
- Use of all facilities (*you can cook in the family's kitchen*)

## When you stay with a homestay arranged by SELC you can expect:

- a private room with: a bed, a desk or a table, a chair, a lamp, storage space for personal belongings
- breakfast and dinner every day (half-board) OR use of kitchen facilities (room & facilities)
- a house key
- bed linen
- the opportunity to practise your English with the family
- a safe environment

Note: SELC Homestay is available only while you are a SELC student





# Lodges



## Sinclairs

Sinclairs has two student-only residences providing clean, budget accommodation located 10 minutes' walk from both SELC and Bondi Beach. There is a range of rooms for single or twin/double tenants and Sinclairs can also arrange twin share rooms for students travelling alone. All rooms come with wireless internet, TV/ DVD player and fridge. Large modern kitchens and laundry facilities are available at both lodges. Light breakfast is included.

## Jack's Place

Jack's place accommodation is ideally located 20 minutes door to door from SELC City or Bondi Campus in the fashionable, exciting and scenic area of Elizabeth Bay. The building was recently fully renovated, offering brand new features like a modern kitchen, a great TV lounge with a big flat screen connected to Foxtel and an amazing rooftop, as well as a study room with direct internet access. Rooms are also furnished with a desk, a wardrobe and single, double or king-size beds, all brand new. Every room gets direct access to the internet.



*"I'm happy I chose to stay at one of SELC's partner student lodges. It was very close to the school and I had the freedom to come and go as I pleased. I made some great friends who were also studying at SELC and my room was comfortable and clean with everything I needed."*



## Bondi Beachouse

Bondi Beachouse is a conveniently located budget hostel (YHA) only 5 minutes' walk from Bondi Beach. Features include: internet cafe, BBQ courtyard, rooftop sun-deck with ocean views, excursions, daily activities, video nights and live entertainment.





*"I had the time of my life at SELC and thanks to all of the interesting and fun activities organised by The Kookaburra Club I was able to make friends and relax outside of the classroom- and practice my English at the same."*

# SELC Social Activities Kookaburra Club



The Kookaburra Club organises social activities such as:

- Monthly welcome party for new students
- Weekly sports activities including football and beach volleyball
- Sightseeing trips in Sydney
- Weekend trips to surfing beaches, farms, wineries and the Blue Mountains
- Regular movie and trivia nights
- Evening harbour cruise parties
- Special cultural and sporting events.
- BBQs on the beach
- Boot camp
- Bowling, tennis, golf and football games

### Weekend Activities

- We organise all kinds of activities for our students to help them explore and enjoy Sydney.
- Surfing lessons and surf weekends
- Skydiving
- Sydney Harbour Bridge climb, jetboat and other harbour activities
- Bushwalking
- Sydney Aquarium and famous zoos
- Help with flights, accommodation and travel plans outside Sydney



*"For me one of the best things about studying at SELC was all the great extra activities. There was always something on and I went to a lot of welcome parties, harbour cruises and BBQs at the beach with SELC students and teachers. I played football and beach volleyball and had a really great time making new friends."*

A great way to practise your English while you have fun!



# Student Life at SELC

A useful guide to each term



## Week 1 - Monday – new student orientation

- 8:30 **Free Coffee** - Arrive at SELC and go to the Student Room for fresh coffee served by our Café English graduates.
- 9:00 **Welcome Speech** - Go to Level 2 Student Room for 'Welcome speech' from our Director of Studies followed by a presentation of all SELC courses from the course Coordinators.
- 9:20 **SELC Placement Test** - This is to test your English level and to determine which class you will join. The test will take approximately 1.5 hours. During your test you will have a speaking interview with one of the teachers to assess your oral ability.
- 11:00 **Orientation** - You will receive an information booklet about SELC and learn more about living and studying in Australia. You will also receive a SELC student card and information about Overseas Student Health Cover, as well as a SELC notebook.
- 11:30 **Tour of the School** - Our teachers will show you round the school campuses.
- 12:00 **Homestay Meeting** - You will meet the Accommodation Officer who will tell you what you need to know about living with your Australian family.
- 12:30 **Optional Tour of Bondi Junction or City area with teachers** - On this tour you will be shown important places such as bus/train stations, banks, the post office, supermarkets and the many food outlets and other places of interest available and conveniently situated close to SELC in either Bondi or Sydney City Campuses.

*NB New students not commencing on a term start date: please be at SELC by 8:45 am for information on your first day.*

## Tuesday – first day of lessons

- 8:45 You will find your name, class and room number on a list in the Student Room
- 9:00 Class begins. You will meet your teacher and other students in your classroom.
- 10:15 **Electives Meeting** - If you are in General English and your level is Intermediate or above, you will have a presentation of the Wednesday Elective options available at SELC. After the presentation you will be asked to give your first and second choice of elective for that term.

## Thursday or Friday evening

### Welcome party

This is a great opportunity for both new and current students to get to know each other and to meet teachers outside the classroom.

## Week 4

### Progress Test for continuing students

Students have a test during the final week of term. The results of this test and the students' overall performance over the term help to determine if they are ready to change class, level or course.

### Friday - Graduation ceremony for finishing students

This is held in the Student Room on the last day of term (generally a Friday). All students finishing their studies at SELC will receive a certificate on this day.



*"I would like to say thanks to all the teachers and amazing staff at SELC for making my English language study such a great experience for me while I was in Sydney. I will never forget the amazing memories I have of SELC."*





## Bondi Campus

Level 2, 19 - 23 Hollywood Avenue  
Bondi Junction Sydney NSW 2022

Tel: (61-2) 8305 5600  
Fax: (61-2) 9389 6977

Email: [info@selc.com.au](mailto:info@selc.com.au)



## Sydney City Campus

Level 6, 56-58 York St  
Sydney, NSW 2000

Tel: (61-2) 9262 3403  
Fax: (61-2) 9262 3402

Email: [info@selc.com.au](mailto:info@selc.com.au)

[www.selc.com.au](http://www.selc.com.au)

Facebook: [facebook.com/SELCPage](https://facebook.com/SELCPage) | Twitter: [twitter.com/SELCAustralia](https://twitter.com/SELCAustralia)